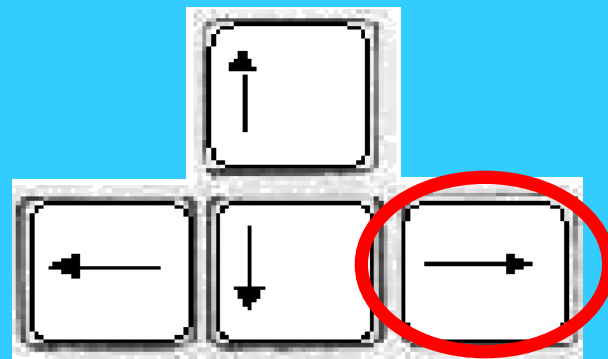


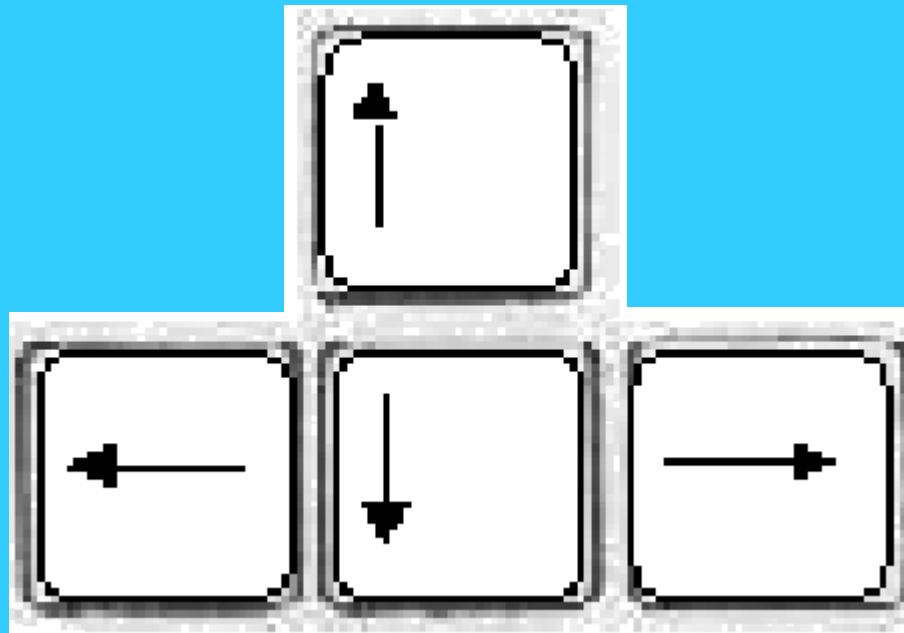
# Big Spring Middle School Computer Lab, Rm. 521

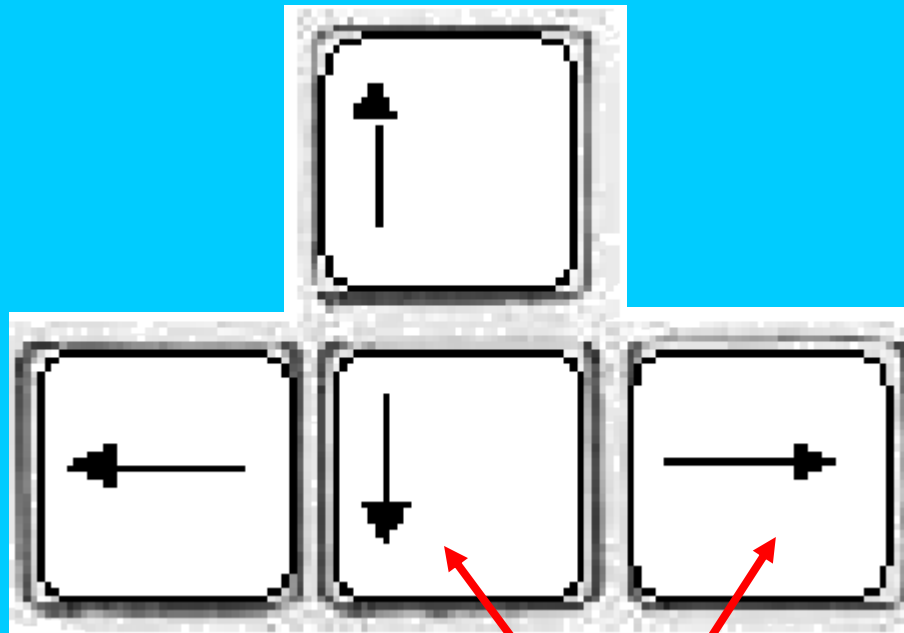
## *Computer Hardware*



Press this button  
on the keyboard

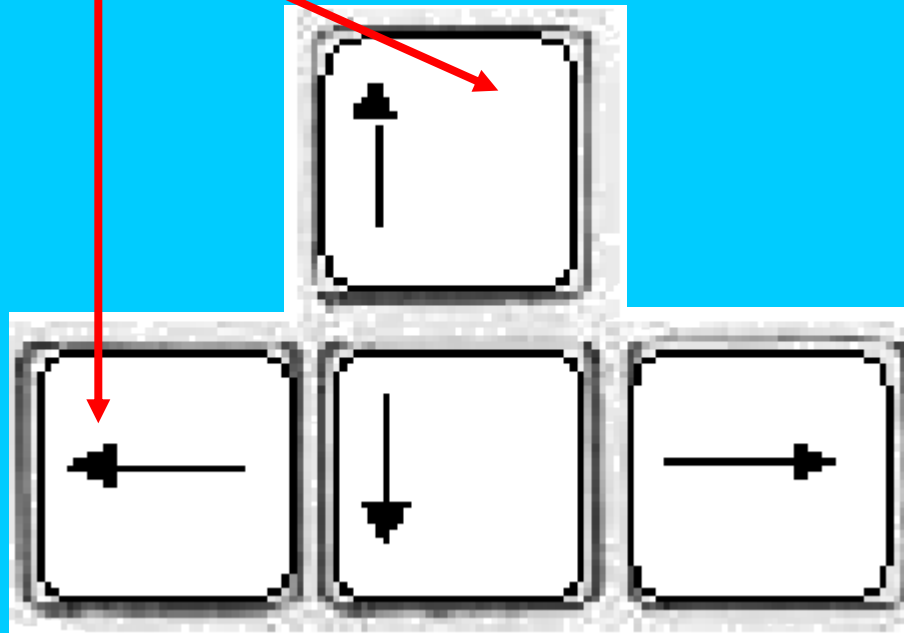
Use the arrow keys to go back or forward.





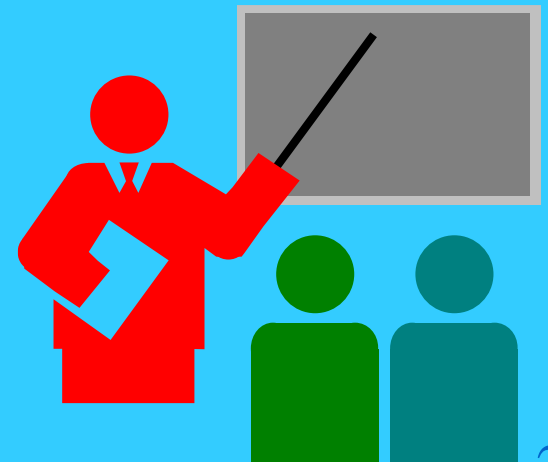
Moves forward to the next slide

Moves back to the previous slide



# Important topics to be presented...

- How computers work,
- Parts of the computer (Hardware),
- Output devices,
- Input devices.



# How Computers Work

A computer collects, processes, stores  
and outputs information.



# How Computers Work

These are the 4 basic actions that a computer will do with information...

- Input
- Process
- Store
- Output

# How Computers Work

- **Input** - An input device lets you communicate with a computer. You use input devices to enter information and issue commands. A keyboard, mouse and joystick are input devices.

- Process
- Store
- Output

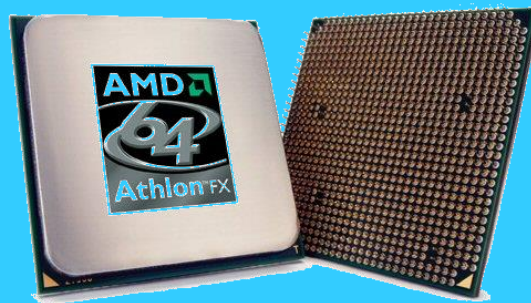




# How Computers Work

- **Input**
- **Process** - The Central Processing Unit, or CPU, is the main chip in a computer. Think of it as the computer's brain. It processes information, performs calculations and manages the flow of information.

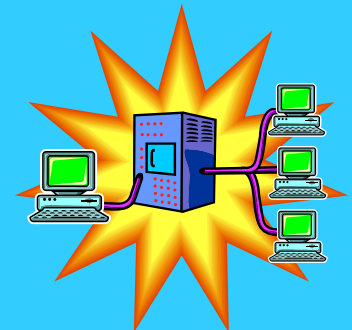
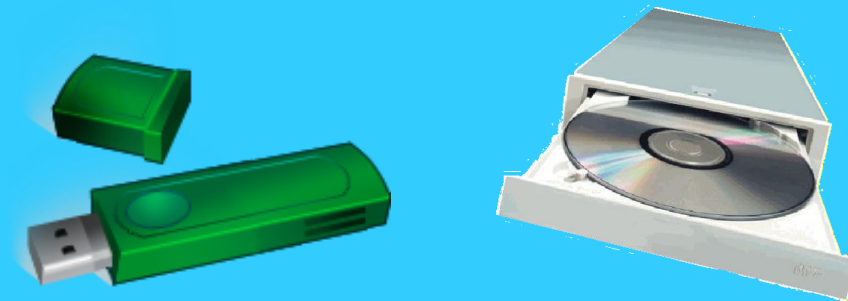
- **Store**
- **Output**



# How Computers Work

- Input
- Process
- **Store** - A storage device holds information. A computer hard drive, a flash drive and a DVD/CD are storage devices, **but when in Rm. 521, you will save files in your home directory on the network.**

- Output



# How Computers Work

- Input
- Process
- Store



- **Output** - An output device lets a computer communicate with you. These devices display information on a screen, create printed copies or generate sound. A monitor, printer and speakers are output devices.

# The Parts of the Computer

There are many separate parts that together make up our 'computer'.



# The Parts of the Computer

Any part of the computer that you can see or touch is called **hardware**.



# The Parts of the Computer

The computer **hardware** includes..

- the computer (computer case),
- the monitor,
- the keyboard,
- the mouse.



# Hardware

Actually, the *computer* is really just this part here.





# Hardware

This is also called the **computer case**. It contains all the major components of a computer system.

It contains the Central Processing Unit (CPU), or the brain of the computer.

The computer's **hard drive**, which is a **storage** device, is also here.





# Hardware

On the computer you will find...

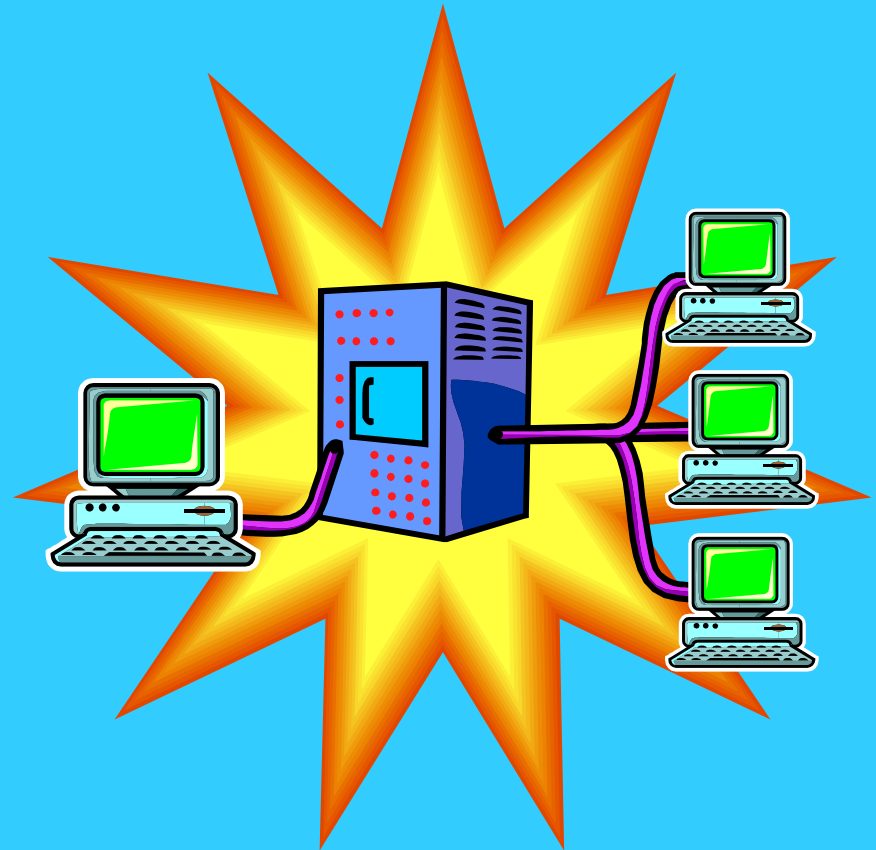
- the DVD/CD drive,
- and a power switch,
- And USB ports.



# Hardware

A **Network** is what you call multiple computers that are connected and can share files and information.

This can be called a **storage** device. When in Rm. 521, you will save files in your home directory which is on the **network**.



# Hardware

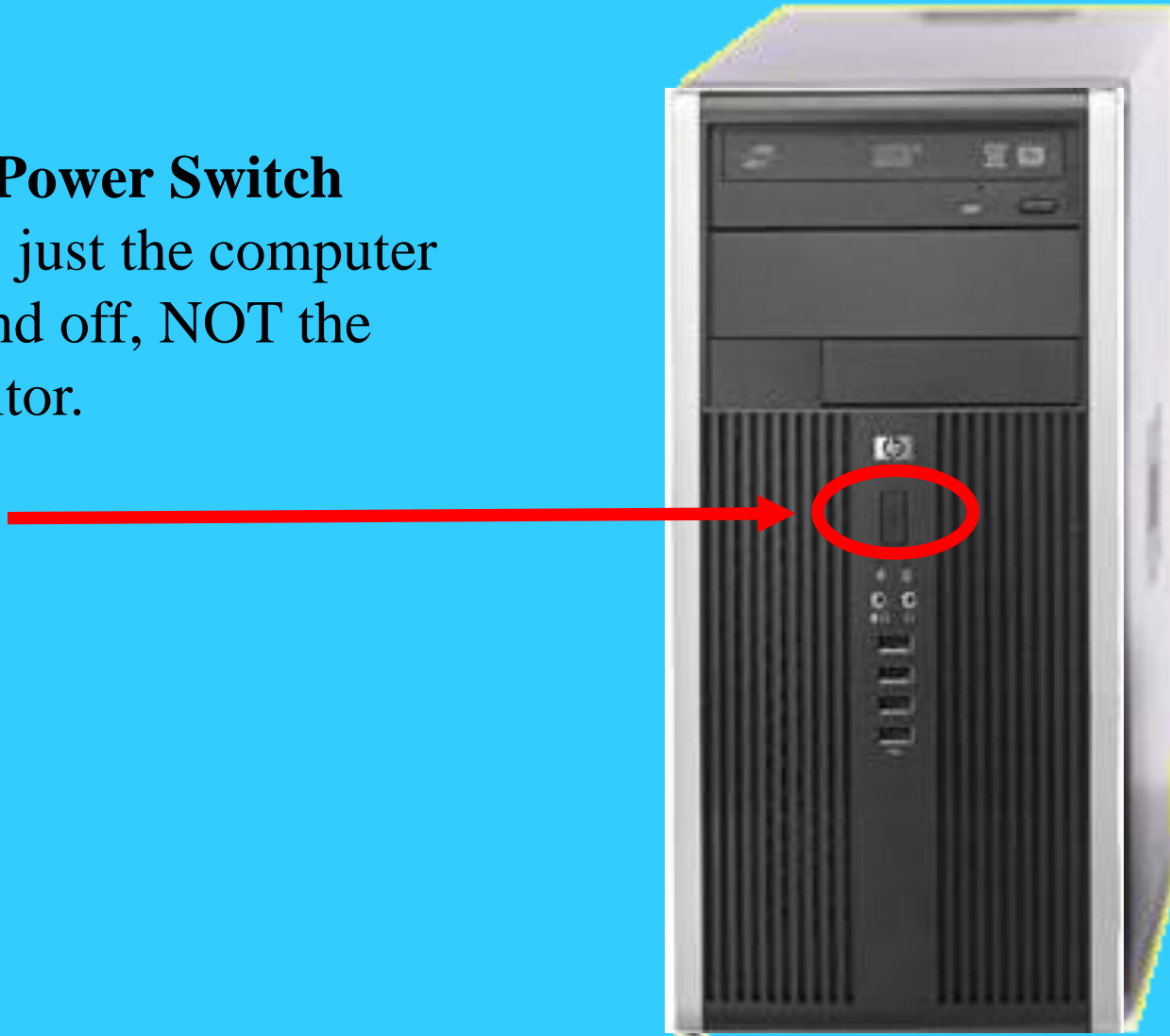
The **DVD/CD drive** is used to load and install programs into the computer.

This can be called a **storage device**.



# Hardware

The **Power Switch** turns just the computer on and off, NOT the monitor.



# Hardware

The **monitor** contains the screen that we look at and sits on top of the computer.

This device displays text (words) and images created by the computer.



# Hardware

The **monitor, printer,**  
and **speakers** are called  
**output devices.**

These are the devices  
that allow the computer  
to **communicate with**  
**us.**



# Hardware

*We* can also communicate with the computer.

The **keyboard** is one of the devices that we use to communicate with the computer.

This device allows you to type information and instructions into the computer.



# Hardware

The **mouse** is another common device that allows *us* to communicate with the computer.

This hand-held device lets you select and move items on the screen.





# Hardware

The **keyboard**, **mouse**, and **joystick** are called **input devices**.

These are the devices that allow *us* to **communicate with the computer**.



# All the Lights...

When this light is **green**,  
the **monitor** and computer  
are on.

If this light is **orange**, then  
the monitor is on, and the  
computer is off, or the  
host keyboard is asleep.



# All the Lights...

The host keyboard is the keyboard that is to the left or right of the 5 computers in Rm. 521.



# All the Lights...

This is the power light for the **computer**.

When this light is on, the computer is on.



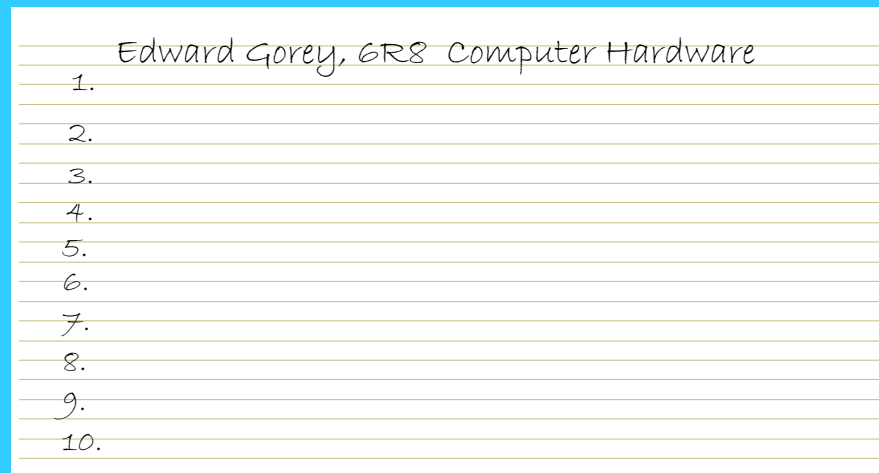
# All the Lights...

This is the **hard drive** light. When on, this light just tells us that the computer is doing some action that you told it to do, such as opening a program or saving a file.



Please print the following information on the answer sheet...

- Your name and section
- The words *Computer Hardware*
- The numbers 1 to 10



Edward Gorey, GRS Computer Hardware

- 1.
- 2.
- 3.
- 4.
- 5.
- 6.
- 7.
- 8.
- 9.
- 10.

When answering the questions,  
just write the letter, not the entire  
answer.

A.

B.

C.

D.

1. Which is **NOT** one of the 4 basic actions done by a computer?

A. Input

B. Process

C. Edit

D. Output



2. During which action does the **computer** communicate with **us**?

A. Input

B. Process

C. Storage

D. Output

3. Which device is an **input** device  
(this is what we use to communicate with the computer)?

A. DVD/CD Drive

B. hard drive

C. mouse

D. flash drive

4. Which device is a **storage** device.

(This is where files could be stored)?

A. monitor

B. keyboard

C. mouse

D. hard drive

5. Which **storage** device will you normally use in Rm. 521 to store your files?
- A. DVD/CD
  - B. network, your student directory
  - C. hard drive
  - D. flash drive

6. Which is **NOT** an example of computer hardware?

A. Windows XP

B. monitor

C. keyboard

D. computer case

7. Where will you find the computer's **CPU** or **central processing unit**

(this is the computer's brain)?

- A. on the hard drive
- B. on a flash drive
- C. in the monitor
- D. in the computer case

8. Which piece of computer **hardware** displays words and pictures for us to see?

A. monitor

B. computer case

C. mouse

D. joy stick

9. Which device is **NOT** an input device used by us to communicate with the computer?

A. keyboard

B. flash drive

C. mouse

D. joy stick



10. What does it mean when this light is **on**?

A. the computer is doing something we told it to do

B. the computer is off

C. the monitor is on

D. the monitor is off



You are now finished with the  
Computer Hardware  
worksheet. Press the *Esc* key  
to close this file, open and do  
the worksheet called Computer  
Software.